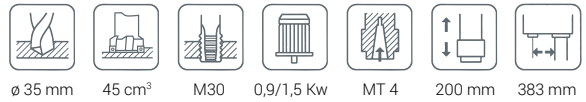




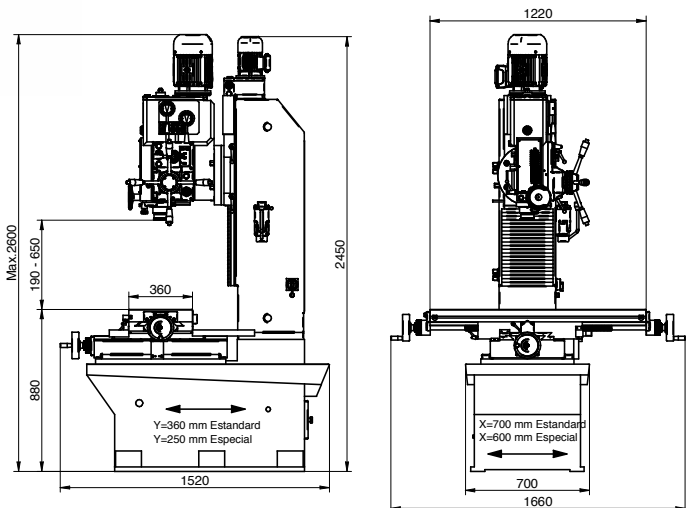
STANDARD EQUIPMENT

- Adjusting of the vertical position of the head by geared-motor
- 45° tilting head on both sides of the central axis
- Hardened and ground high quality steel gears
- Gear box lubrication by automatic pump
- Automatic guide greasing by manual pump
- High/low speed range selector
- Coolant tank and pump in machine base
- Worklight
- Co-ordinate cross table
- Automatic feed and cut-off by electromagnetic clutch
- Front hand wheel for fine feed work
- Depth scale and adjustable depth stop
- Automatic tool ejector
- Electric equipment integrated on machine's head
- Emergency STOP push button
- Spindle reversing switch
- Safety drill guard with microswitch
- CE mark

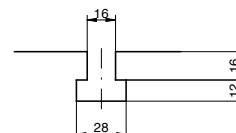
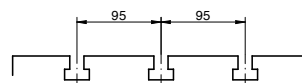


DIMENSIONS

Round column

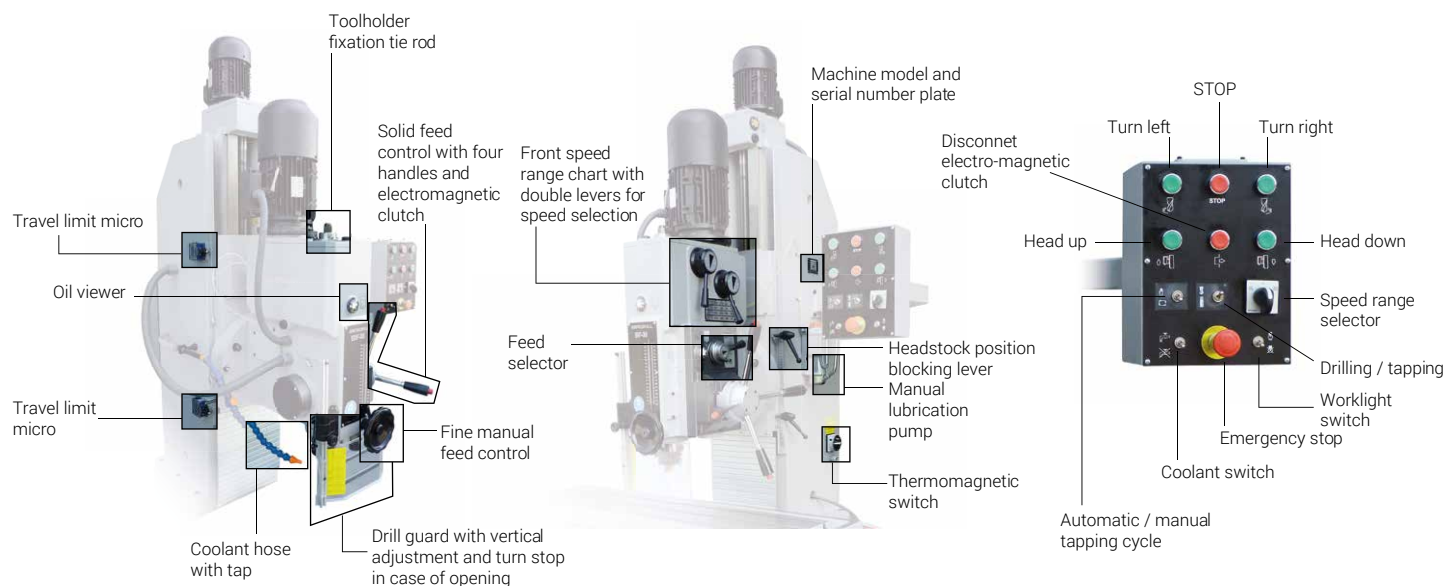


EBF - 35



F SERIES

Drilling/Milling machine/Prismatic Column/ Gear transmission



|| CHARACTERISTICS

EBF-35

Maximum drilling capacity in steel St. 50/60	[ø mm]	35
Maximum milling capacity in steel St. 50/60	[cm ³ /min]	55
Maximum tapping capacity in steel St. 50/60	[mm]	M 35
ISO taper (upon request)	[Nr.]	30
Morse Taper MT	[Nr.]	4
Maximum spindle stroke (drilling depth)	[mm]	180
Main motor power	[HP (Kw)]	1,2 / 2 (0,9/1,5)
Transmission		Gear box
Number of speeds		16
Speed range with motor at 750/1500 rpm 50 Hz 3Ph. Upon request: Motor at 1800/3600 rpm 60 Hz 3Ph. (125-2850 rpm)	[rpm]	94-135-189-207-271-303-347-416-497-606- 695-760-995-1112-1520-2225 113-162-226-248-324-363-417-496-597-726- 834-912-1194-1335-1824-2670
Feed		Automatic by electromagnetic clutch
Nr. of automatic feeds		3
Automatic feed range	[mm/rev]	0,1 - 0,18 - 0,24
Worktable dimensions (LxW).	[mm]	360 x 1220
Longitudinal movement of the table (X)	[mm]	700
Cross movement of the table (Y)	[mm]	360
Distance from spindle centre to column face	[mm]	390
Net weight	[Kg]	910
Gross weight with packing	[Kg]	1400
Packing dimensions (length x width x height)	[m]	1,68 x 1,68 x 2,52

OPTIONAL EQUIPMENT

SPEED CONTROL / MEASURE / TAPPING



LBC
Lector de profundidad.
Disponible para todas las series.



LDG
Digital read-out system for
the table.



RS
Automatic feed reversing for tapping.
Standard for **Z(34-40)** y **C** serie.
Available for all series.



RPF
Automatic tapping cycle by lead
screw system with brake motor for
spindle reverse.
Available for **X/A/B/P** series.



HGP
Master guide spindle and nut set.
Available for **X/A/B/P** series.

STANDARD VICES



FS-150

Vise with fixed base
(Heavy Series).
Maximum opening: 150 mm.
Jaw width: 150 mm.
Jaw height: 44 mm.
Net weight: 28 Kg.
Available for **A/B/C/P/F** series.



FG-150

Vise with swiveling base
(Heavy Series).
Maximum opening: 150 mm.
Jaw width: 150 mm.
Jaw height: 44 mm.
Net weight: 37 Kg.
Available for **A/B/C/P/F** series.

RAPID CLOSE AND SELF-CENTERING VICES



FR-80

Opening-cam rapid close vice.
Maximum opening: 80 mm.
Jaw width: 80 mm.
Jaw height: 20 mm.
Net weight: 6 Kg.
Available for all series.



FR-125

Opening-cam rapid close vice.
Maximum opening: 125 mm.
Jaw width: 125 mm.
Jaw height: 30 mm.
Net weight: 23 Kg.
Available for all series.



FK-103

Self-centering vice.
Maximum opening: 103 mm.
Jaw width: 103 mm.
Jaw height: 20 mm.
Net weight: 12 Kg.
Available for all series.

TOOL HOLDERS



DRILL-CHUCKS

Self-centering drill-chuck from dia. 3 to dia.16 Morse taper 3 & 4. Available for all series.



TAPHOLDER

Morse taper, tapholder and tapping collets.



REDUCING SLEEVES

Self-centering drill-chuck from dia.1 to 16 Morse taper 3-4 & 5. Available for all series.



ISO 40

Spindle with quick change nut. Available for **EBP-50** models.

ISO 50

Spindle with quick change nut. Available for **EBP-70** models.

CHUCKS, FOOT PEDALS...



PL

Manual jaw chuck. Available for all series.



PN

Pneumatic jaw chucks. Available for all series.



PST

Cycle or spindle turn START foot pedal.

PSR

Spindle turn reverse foot pedal (for tapping) Available for all series.



PEM

Emergency STOP foot pedal. Available for all series.