

Machining unit for modular assembly.  
**Special design for Multispindle head.**

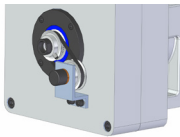


## CGCM.30

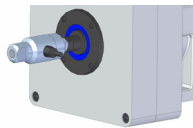
Maximum drilling capacity in steel (700 N/mm <sup>2</sup> )	Ø 30 mm
Maximum tapping capacity in steel (700 N/mm <sup>2</sup> )	M18
Revolutions range (50 Hz)	308—8961 r.p.m.
Maximum turning torque	59 Nm.
Spindle Cone	DIN 2080
Weight (without motor)	~75 Kg.
Available motors (50 Hz)	750 r.p.m. / 1,5 Kw. 1000 r.p.m. / 2,2 Kw. 1500 r.p.m. / 4 Kw. 3000 r.p.m. / 4 Kw.

[ THERE ARE OTHER POSSIBLE COMBINATIONS, PLEASE CONSULT ]

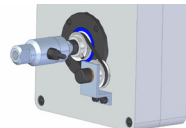
## OPTIONAL EQUIPMENT



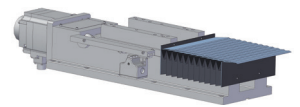
**RG:** Encoder for rigid tapping and tool positioning.



**RU:** Rotary joint for tool internal cooling.



**RGU:** Rotary joint + encoder.



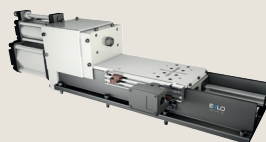
Protection bellows for slides guides.

\*\* Pneumatic clamping (AN) and hydraulic clamping (AH), **NOT AVAILABLE.**

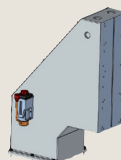
## COMBINABLE ELEMENTS



**CA.30:** Feed slide with or without servo coupling joint.



**CAN.30:** Oleopneumatic feed slide.



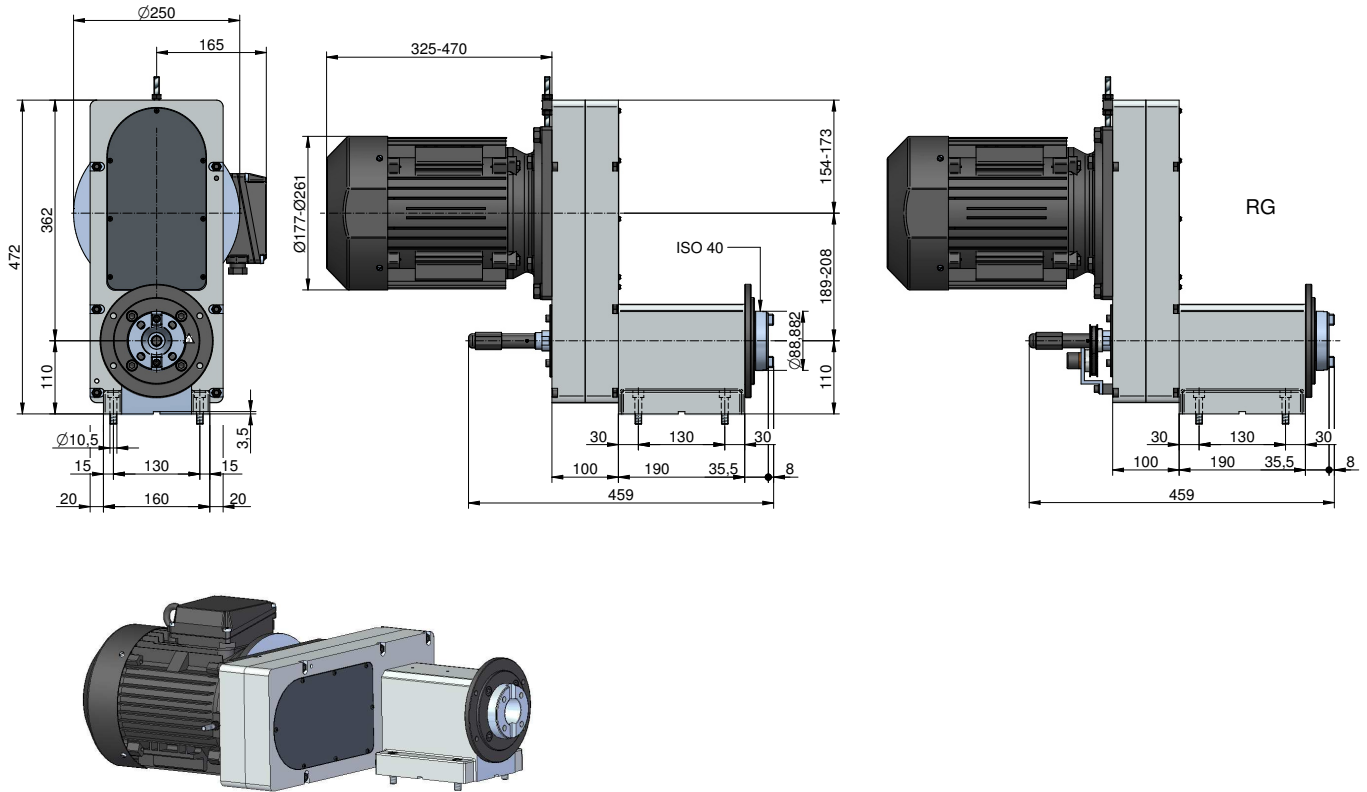
**SB Column**



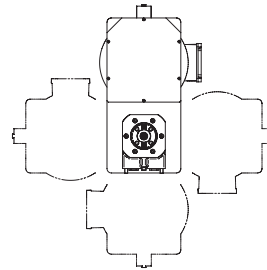
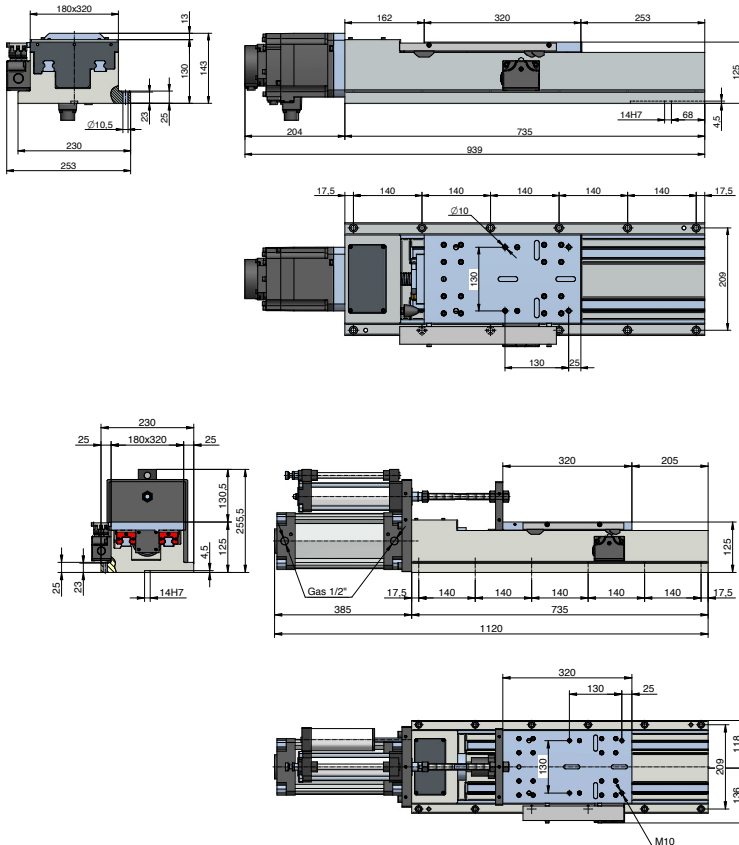
**VH Multispindle head**



**Tool holder**



## RECOMMENDED ACCESSORY



The pulley box as well as the connectors box of the motor can be assembled in any of these positions.

### CA.30/250

Stroke	250 mm
Thrust force (kN)	Up to 8
Ball spindle (mm)	Ø25x5
Weight without motor	68 Kg.
Weight with motor	78 Kg.

### CA.30/350

Stroke	350 mm
Thrust force (kN)	Up to 8
Ball spindle (mm)	Ø25x5
Weight without motor	80 Kg.
Weight with motor	90 Kg.

### CAN.30

Stroke	150 mm
Thrust force to 6 bar (kN)	4,5
Weight	65 Kg.

\* Measures can vary without previous notice. Ask for the updated drawing in every case.