



## Machining unit for modular assembly



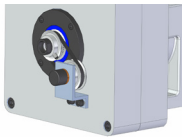
ø 80 mm    M 42    YES

### CG.50

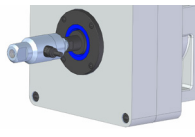
Maximum drilling capacity in steel (700 N/mm <sup>2</sup> )	Ø 80 mm
Maximum tapping capacity in steel (700 N/mm <sup>2</sup> )	M42
Revolutions range (50 Hz)	380 – 1475 r.p.m.
Maximum turning torque	540 Nm.
Spindle Cone	ISO 50
Weight (without motor)	~300 Kg.
Available motors (50 Hz)	990 r.p.m. / 22 Kw. 1475 r.p.m. / 22 Kw.

[ THERE ARE OTHER POSSIBLE COMBINATIONS, PLEASE CONSULT ]

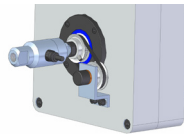
### OPTIONAL EQUIPMENT



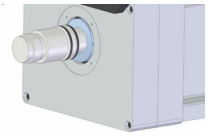
**RG:** Encoder for rigid tapping and tool positioning.



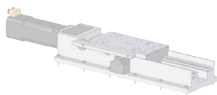
**RU:** Rotary joint for tool internal cooling.



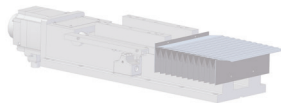
**RGU:** Rotary joint + encoder.



**AH:** Hydraulic clamping (80 bar.)



\*\* Feed slide with or without servo coupling. **CUSTOMIZED DESIGN UNDER REQUEST.**



\*\* Protection bellows for slides guides. **CUSTOMIZED DESIGN UNDER REQUEST.**

\*\* Pneumatic clamping (AN), **NOT AVAILABLE.**

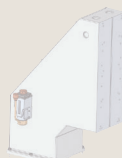
### COMBINABLE ELEMENTS



**VH** Multispindle head



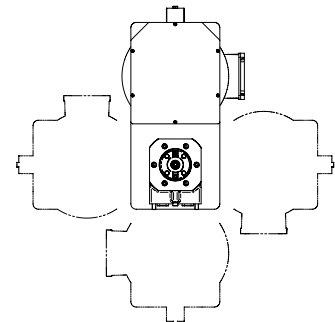
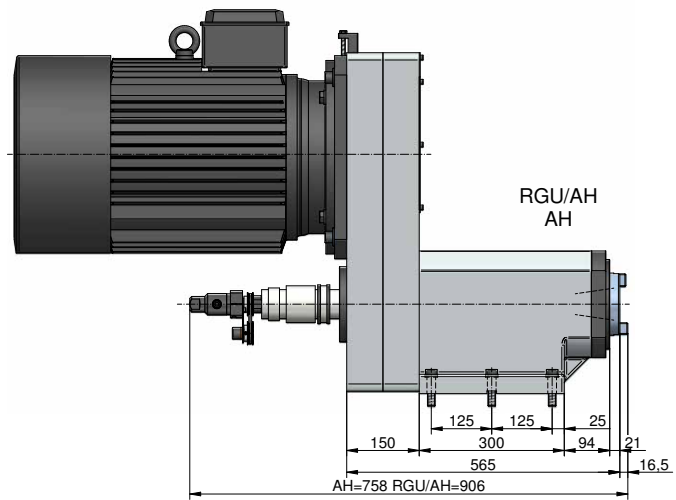
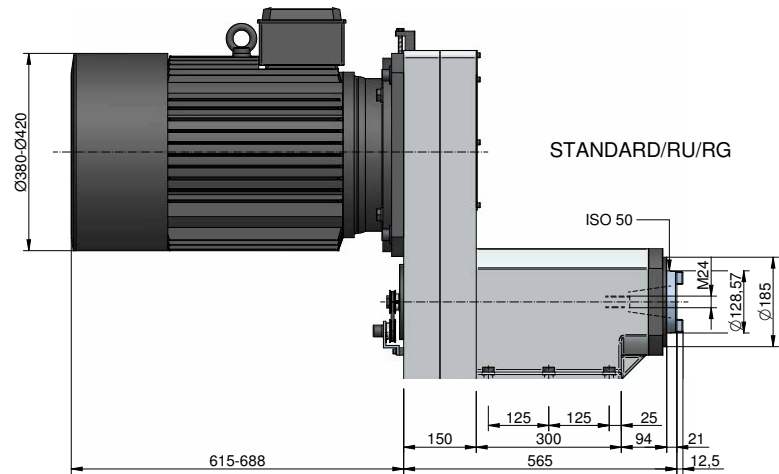
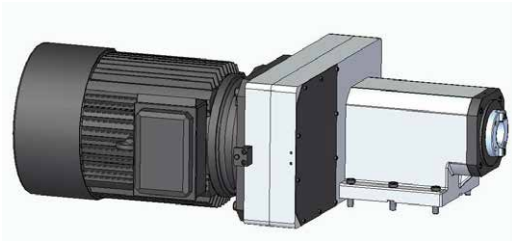
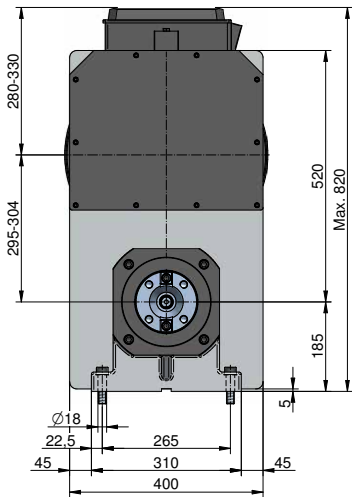
**Angular headstock**  
\*request for models



**Customized column design**  
under request



**Tool holder**



The pulley box as well as the connectors box of the motor can be assembled in any of these positions.