

Machining unit for modular assembly



Available in NORMS DIN 2080 /
DIN 69871 / MAS 403-BT



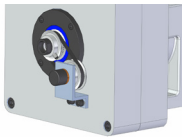
ø 40 mm M 24 YES

CG.40

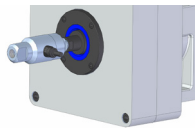
Maximum drilling capacity in steel (700 N/mm ²)	Ø 40 mm
Maximum tapping capacity in steel (700 N/mm ²)	M24
Revolutions range (50 Hz)	322—2175 r.p.m.
Maximum turning torque	228 Nm.
Spindle Cone	ISO 40
Weight (without motor)	~100 Kg.
Available motors (50 Hz)	1000 r.p.m. / 5,5 Kw. 1500 r.p.m. / 7,5-11 Kw.

[THERE ARE OTHER POSSIBLE COMBINATIONS, PLEASE CONSULT]

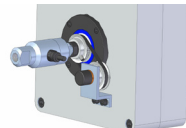
OPTIONAL EQUIPMENT



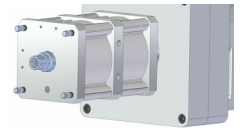
RG: Encoder for rigid tapping and tool positioning.



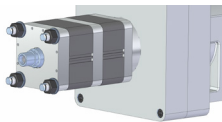
RU: Rotary joint for tool internal cooling.



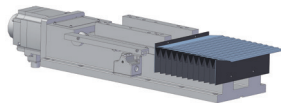
RGU: Rotary joint + encoder.



AN: Pneumatic clamping (5,5 bar.)

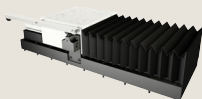


AH: Hydraulic clamping (20 bar.)



Protection bellows for slides guides.

COMBINABLE ELEMENTS



CA-40 Slide



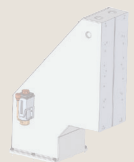
VH Multispindle head



Angular headstock
*request for models



Tool holder



Customized desing
under request

