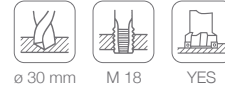




Machining unit for modular assembly



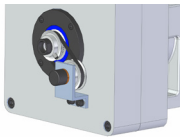
Available in NORMS DIN 2080 / DIN 69871 / MAS 403-BT

CG.30

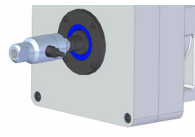
Maximum drilling capacity in steel (700 N/mm ²)	Ø 30 mm
Maximum tapping capacity in steel (700 N/mm ²)	M18
Revolutions range (50 Hz)	328—3834 r.p.m.
Maximum turning torque	56 Nm.
Spindle Cone	ISO 40
Weight (without motor)	~65 Kg.
Available motors (50 Hz)	750 r.p.m. / 1,5 Kw. 1000 r.p.m. / 2,2 Kw. 1500 r.p.m. / 4 Kw. 3000 r.p.m. / 4 Kw.

[THERE ARE OTHER POSSIBLE COMBINATIONS, PLEASE CONSULT]

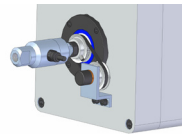
OPTIONAL EQUIPMENT



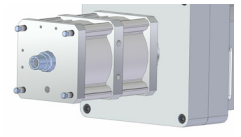
RG: Encoder for rigid tapping and tool positioning.



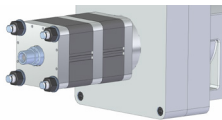
RU: Rotary joint for tool internal cooling.



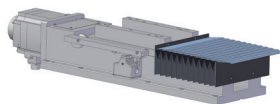
RGU: Rotary joint + encoder.



AN: Pneumatic clamping (5,5 bar.)



AH: Hydraulic clamping (20 bar.)

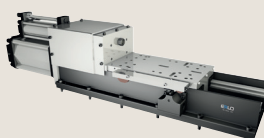


Protection bellows for slides guides.

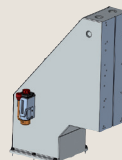
COMBINABLE ELEMENTS



CA.30: Feed slide with or without servo coupling joint.



CAN.30: Oleopneumatic feed slide.

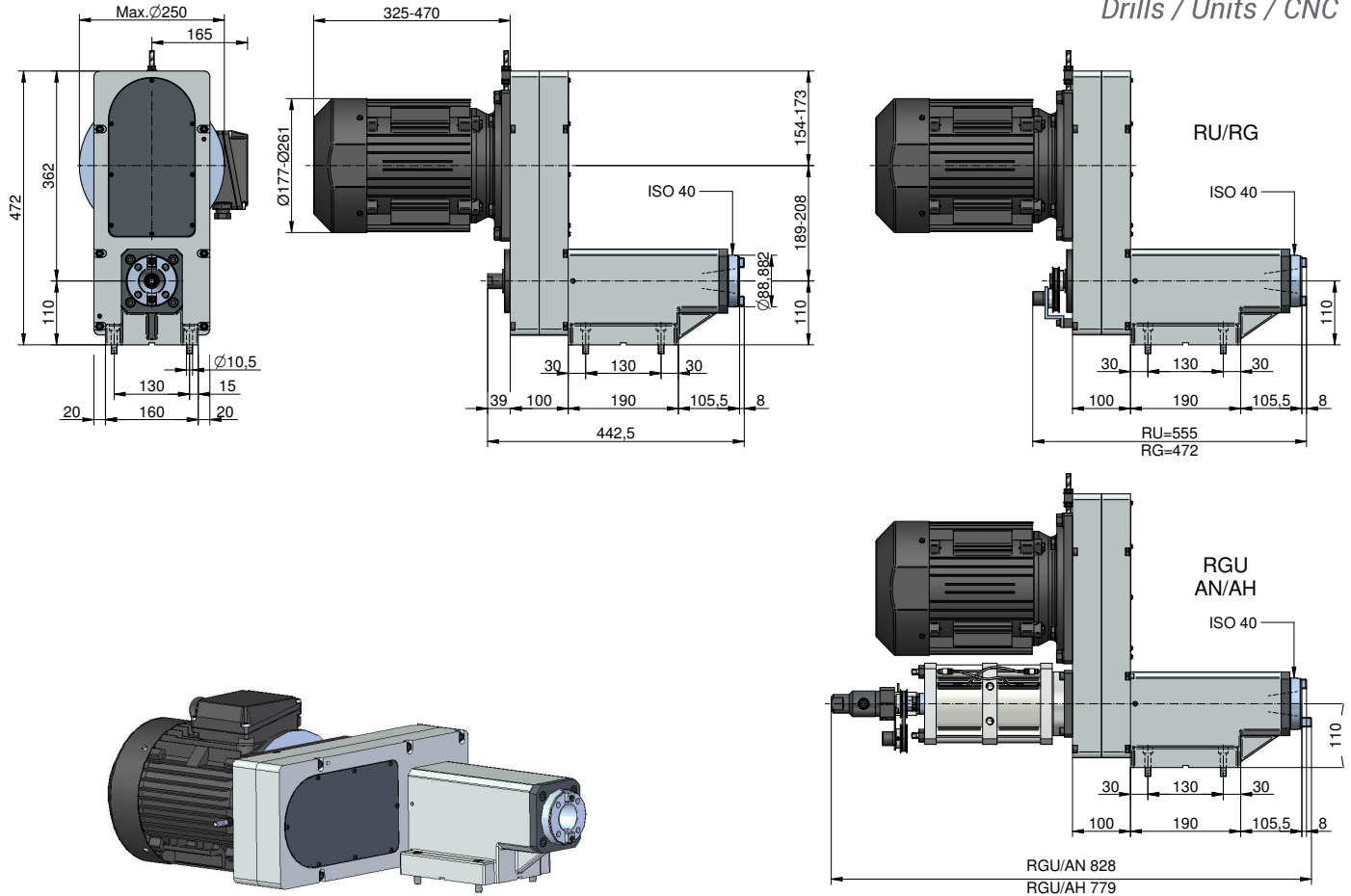


SB Column

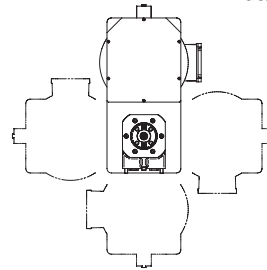


Tool holder

DIMENSIONS



RECOMMENDED ACCESSORY



The pulley box as well as the connectors box of the motor can be assembled in any of these positions.

CA.30/250

Stroke	250 mm
Thrust force (kN)	Up to 8
Ball spindle (mm)	$\varnothing 25 \times 5$
Weight without motor	68 Kg.
Weight with motor	78 Kg.

CA.30/350

Stroke	350 mm
Thrust force (kN)	Up to 8
Ball spindle (mm)	$\varnothing 25 \times 5$
Weight without motor	80 Kg.
Weight with motor	90 Kg.

CAN.30

Stroke	150 mm
Thrust force to 6 bar (kN)	7
Weight	100 Kg.

* Measures can vary without previous notice. Ask for the updated drawing in every case.